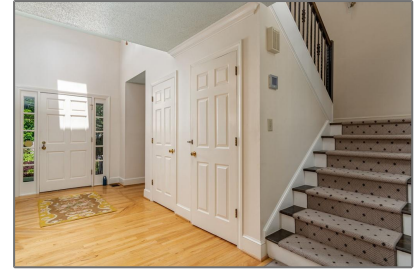


# 175 Inland Ridge Way

4,200 Sqft - 175 Inland Ridge Way, Sandy Springs, Georgia 30342



## Basic [Details](#)

Listing Type:	<b>Sold</b>
Asking Price:	<b>\$710,000</b>
Bedrooms:	<b>5</b>
Bathrooms:	<b>3</b>
Half Bathrooms:	<b>1</b>
Square Footage:	<b>4,200 Sqft</b>
Year Built:	<b>1985</b>
Lot Area:	<b>0.42 Acres</b>

## Features

Basement:

Full, Daylight, Finished, Finished Bath, Exterior Entry, Bath/stubbed

## Address [Map](#)

Street:	<b>175 Inland Ridge Way</b>
Country:	<b>US</b>
State:	<b>GA</b>
County:	<b>Fulton</b>
City:	<b>Sandy Springs</b>
Zipcode:	<b>30342</b>
Longitude:	<b>W85° 38' 2.3"</b>
Latitude:	<b>N33° 53' 52.5"</b>

## Agent [Info](#)



Ben Hirsh

☎ 4047974912

✉ Ben@Buckhead.com

---